

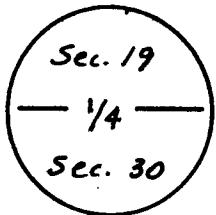
RECEIVED
LARAMIE COUNTY
CHEYENNE, WY.

'86 MAY 16 PM 2 32

CERTIFIED LAND CORNER RECORDATION

R-66-W

DESCRIPTION OF CORNER EVIDENCE FOUND, AND ORIGINAL RECORD (If known)

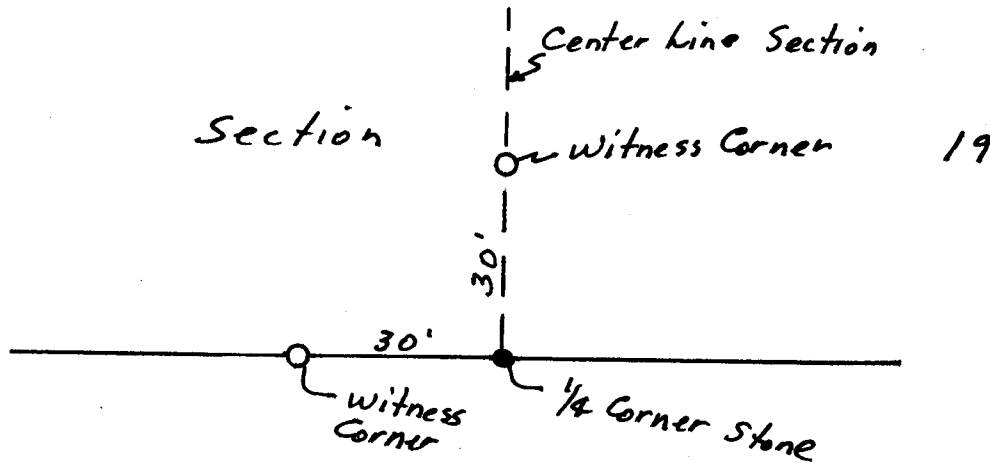


Found Stone generally matching the description of the original monument which is a Granite Boulder 15" x 7" x 6". Mark in North Face is weak. x Mark on Top of Boulder

DESCRIPTION OF MONUMENT AND ACCESSORIES ESTABLISHED TO PERPETUATE THE ORIGINAL LOCATION OF THIS CORNER:

Set 5/8" x 24" Rebar 30' North on Center Line of Section and 30' West on Section Line Both as Witness Corners, Both having Aluminum I. D. Caps.

SKETCH, WITH COURSE AND DISTANCE TO ADJACENT CORNER IF DETERMINED IN THIS SURVEY. (May Sketch or Paste Reproduction on Reverse Side.)



See Reverse Side
For Corner Ties

I, Edward C. Fry certify that I have carefully performed or reviewed the work done on the diagrammed corner as reported on this recordation form and approve the same.

Edward C. Fry 4-23-86 P.E.L.S. 662
Signature of Surveyor Registration No.

STATE OF WYOMING,
Office of Clerk and Recorder,
County of Laramie

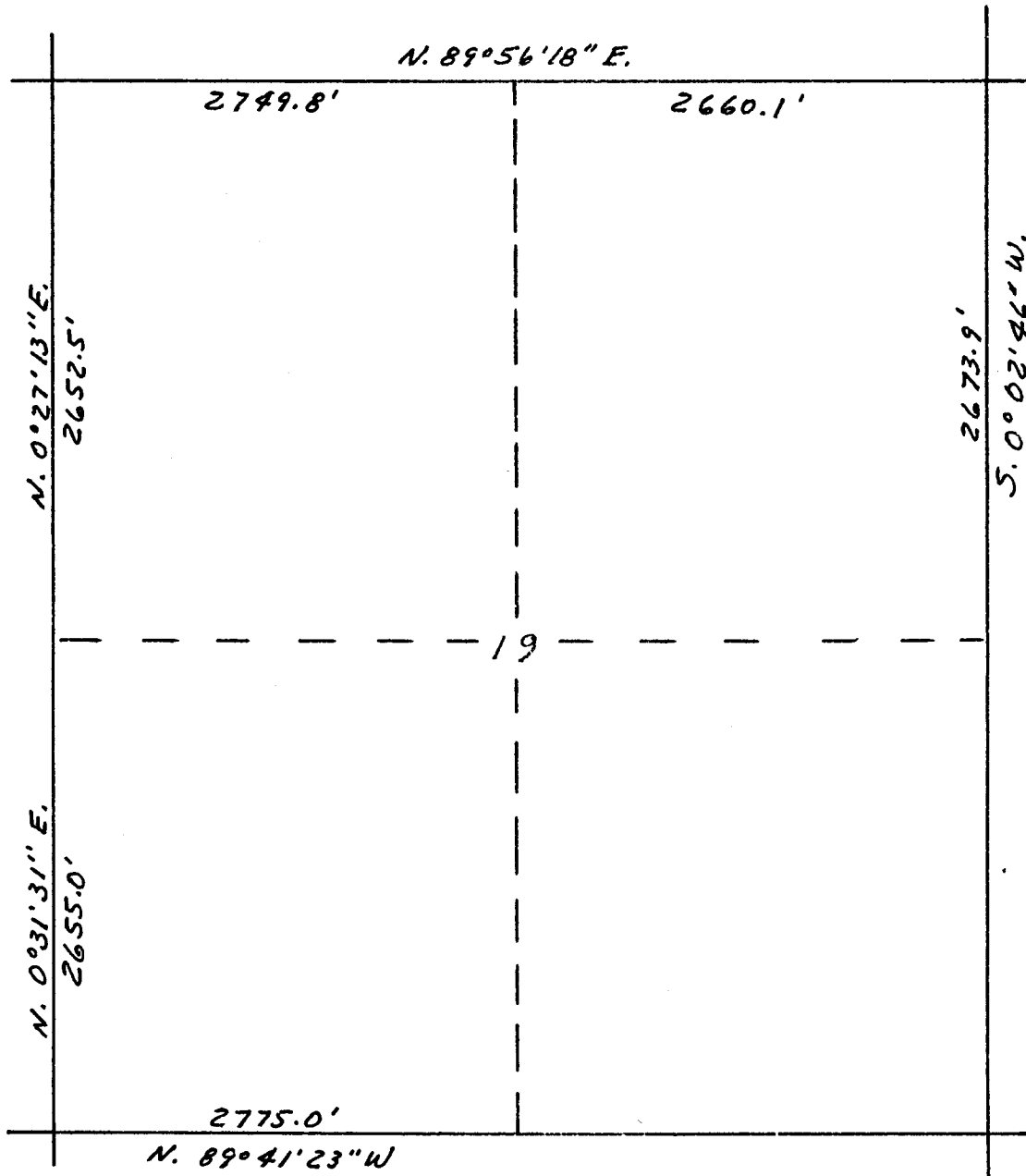
This "corner record" was filed for record on the 110 day of May, 1986, was noted on the cross-index plat and is assigned page No. _____, in book No. _____

Janet C. Whitehead
County Official

Cross Index No. <u>A-3</u>	T. <u>110</u>	R. <u>110</u>	Mer.
	T. _____	R. _____	Mer.
	T. _____	R. _____	Mer.
	T. _____	R. _____	Mer.
	T. _____	R. _____	Mer.
	T. _____	R. _____	Mer.
	T. _____	R. _____	Mer.

SE S 179 80 4000 000

R-66-W



T
16
N

